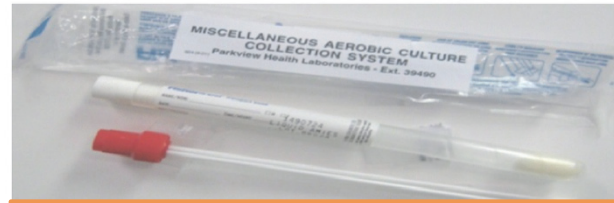


Specimen Collection Guide

Microbiology Collection Media



Anaerobic Culture Swab



Miscellaneous/Aerobic Culture Swab



Stool Culture/Carey Blair Swab



Nasopharyngeal Swab



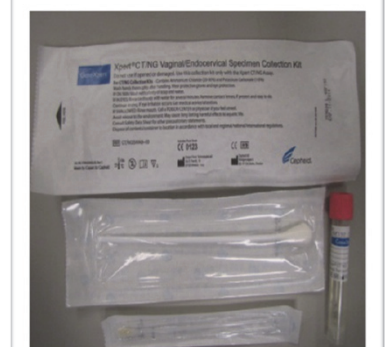
Immune Fecal Occult
Blood Collection



O&P Kit, 3 Vial
Transport System



Sputum Collection
Container



Chlamydia/GC
Collection Kit



Influenza by PCR
Collection Kit
(Use NP or Aerobic swab for Rapid Flu
testing)



Herpes Culture
Collection Kit



Urine
Collection Kit



Sterile
Container



Non-Sterile
Container



Hemocult Stool
Card

● **NOTE:** All specimens entering Parkview Health Laboratories **MUST** be labeled with: Patient's Full Legal Name(no initials or nicknames), Date of Birth, Date and Time of Collection. Site and Source must be listed for micro-specimens.

● For detailed specimen information contact CRC at **266-1500**

Revision Date: 4/27/15			
Test Name	Specimen Collection Media	Time frame to get to Laboratory	Store Specimen
AEROBIC/MISC. CULTURE	AEROBIC SWAB	WITHIN 24 HOURS	ROOM TEMP
ANAEROBIC & AEROBIC MISC. CULTURE	ANAEROBIC AND AEROBIC SWABS	WITHIN 24 HOURS	ROOM TEMP
GU, FEMALE CULTURE	AEROBIC SWAB	WITHIN 24 HOURS	ROOM TEMP
GU, MALE CULTURE	AEROBIC SWAB	WITHIN 24 HOURS	ROOM TEMP
RESPIRATORY CULTURE	STERILE CONTAINER	WITHIN 24 HOURS	REFRIGERATED
STOOL CULTURE	CAREY BLAIR SWAB *Collect a pea size of fecal matter in Carey Blair Swab	WITHIN 24 HOURS	ROOM TEMP
URINE CULTURE	UA COLLECTION KIT *Do not send the blue container, discard after urine has been transferred into tubes	WITHIN 24 HOURS	REFRIGERATE
OCCULT BLOOD, STOOL	HEMOCULT CARD OR IMMUNE FECAL OCCULT BLOOD COLLECTION	WITHIN 1 WEEK	ROOM TEMP
PARASITOLGY (O&P) Raw stool container can be used to test for C-Diff, Rotavirus, and Occult Blood	3 VIAL TRANSPORT SYSTEM	WITHIN 12 DAYS	WHITE VIAL=REFRIGERATE PINK AND BLUE VIALS=ROOM TEMP
***MRSA NASAL SCREEN	AEROBIC/MISC. CULTURE	WITHIN 24 HOURS	Place a few drops of saline solution into swab and store at ROOM TEMP
***Other source that nasal, please order/request Misc/Aerobic Culture and indicate on order to check for MRSA along with source	AEROBIC/MISC. CULTURE	WITHIN 24 HOURS	Place a few drops of saline solution into swab and store at ROOM TEMP
CHLAMYDIA BY DNA PROBE	CHLAMYDIA/GC COLLECTION KIT	WITHIN 1 WEEK	ROOM TEMP OR REFRIGERATE
N.GONORRHEA DNA PROBE	CHLAMYDIA/GC COLLECTION KIT	WITHIN 1 WEEK	ROOM TEMP OR REFRIGERATE
THROAT CULTURE	AEROBIC SWAB	WITHIN 24 HOURS	ROOM TEMP
GROUP B STREP	AEROBIC SWAB	2 DAYS	ROOM TEMP
ACID FAST CULTURE	SPUTUM OR STERILE COLLECTION COTAINER	2 HOURS AT ROOM TEMP OR 24 HOURS REFRIGERATED	<<<<<<<<<<<<
FUNGAL CULTURE	SPECIMEN OR SWAB? SKIN, HAIR, NAILS, SPUTUM IN STERILE CONTAINER	WITHIN 24 HOURS	ROOM TEMP
C-DIFF	PLAIN STOOL (NON-STERILE) CONTAINER	WITHIN 2 DAYS	REFRIGERATE
ROTAVIRUS	PLAIN STOOL (STERILE CONTAINER)	WITHIN 2 DAYS	REFRIGERATE
INFLUENZA A&B RAPID	NASOPHAYNGEAL CULTURE SWAB OR AEROBIC SWAB	WITHIN 24 HOURS	REFRIGERATE
INFLUENZA A&B, PCR	INFLUENZA BY PCR COLLECTION KIT (UTM FOR INFLUENZA)	WITHIN 72 HOURS	REGRIGERATE
HERPES CULTURE	HERPES CULTURE COLLECTION KIT (MYRT)	WITHIN 48 HOURS	REFRIGERATE
RESPIRATORY SYNCYTIAL VIRUS (RSV)	NASOPHARYNGEAL SWAB	WITHIN 48 HOURS	REFRIGERATE